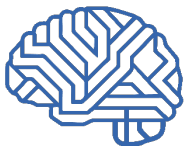


Katrine Astrup Sørensen
PT, MSc, Ph.d. studerende
Fysio- og Ergoterapi,
Intensivt afsnit
Aarhus Universitetshospital
katroso@rm.dk





@Sygeplejesterger



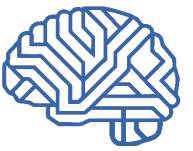
“... Jeg har brug for hjælp og støtte, det ved jeg, men jeg vil ikke være en byrde for andre. Jeg får hjælp til at rehabilitere min krop, men ikke mit hoved. For at være ærlig er jeg ikke sikker på, hvordan...”

Anette Alrø, PhD dissertation, 2024



Udvikling og evaluering
af en kognitiv intervention til kritisk syge patienter
under og efter intensivindlæggelse

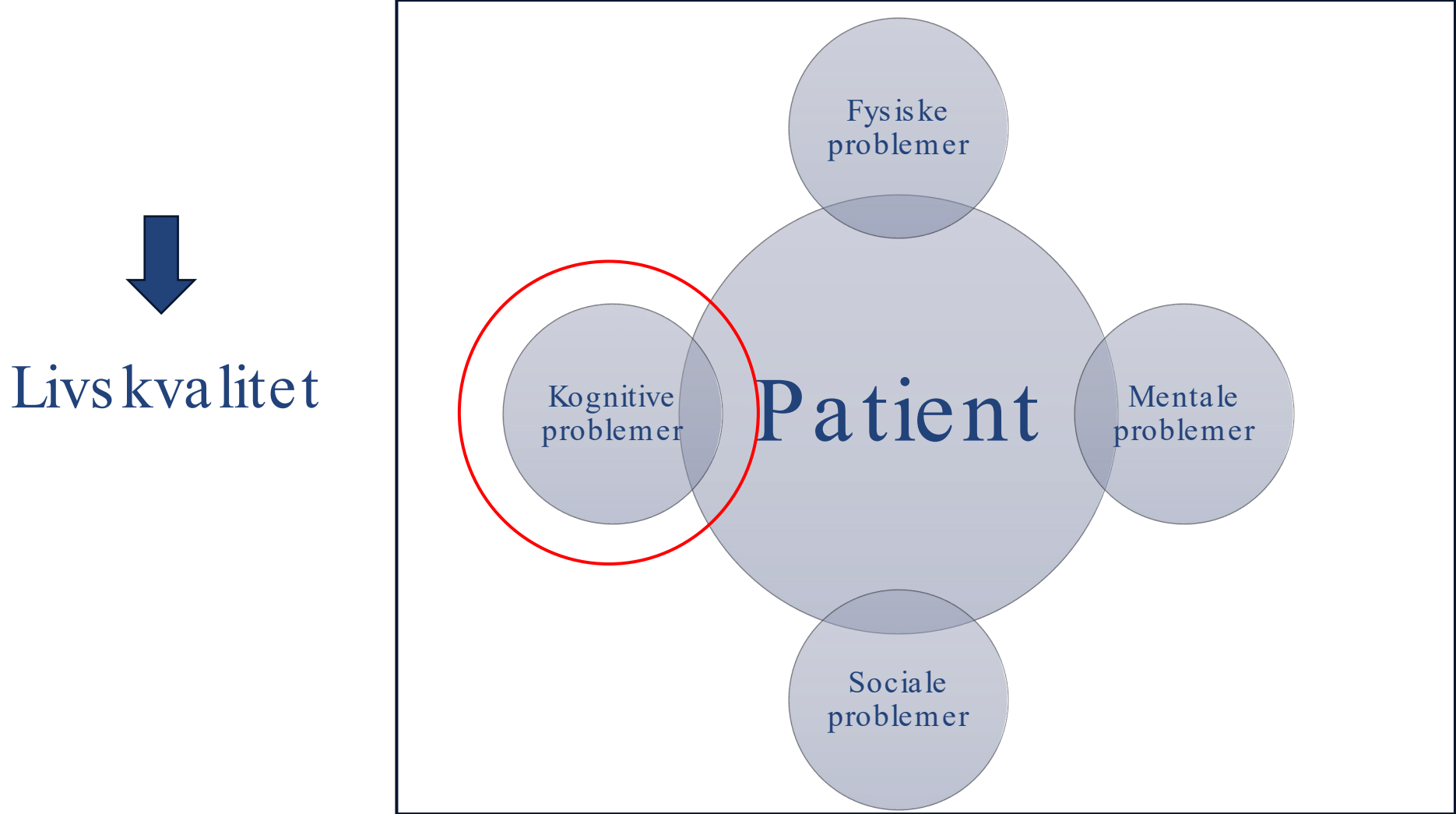
Baggrund

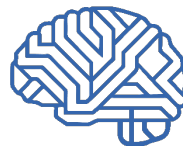


@sygeplejstregger



Post Intensive Care Syndrome



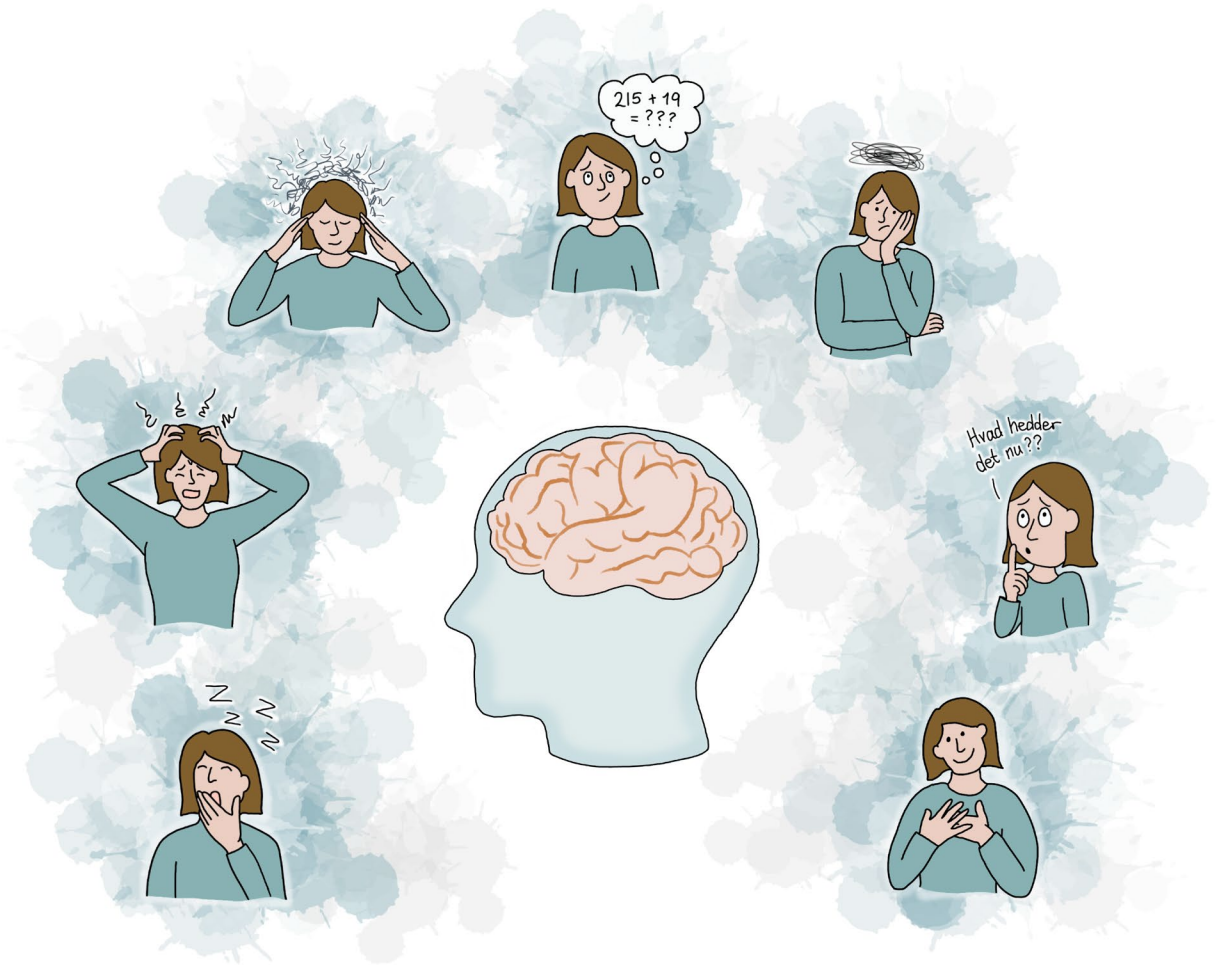


Hvad er problemet?

Prævalens 10%-100%
(Honarmand 2024)



Hvornår og hvordan støtter
vi patienterne bedst?



@sygeplejstregger



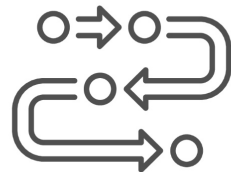
Hvad gjorde vi så?



Vidensgrundlag



Hvad gjorde vi så?

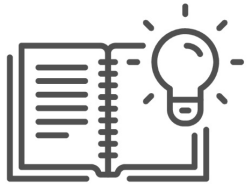


Videns grundlag

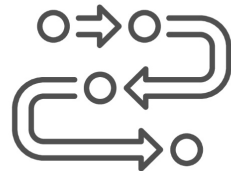
Samskabelse
med
interessenter



Hvad gjorde vi så?



Videns grundlag



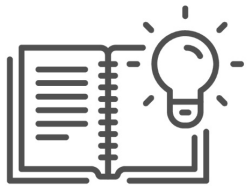
Samskabelse
med
interessenter



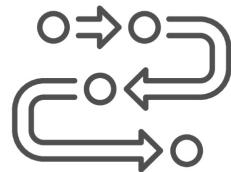
Rådgivning ved
eksperter



Hvad gjorde vi så?



Videns grundlag



Samskabelse
med
interessenter



Rådgivning ved
eksperter



PRODUKT



Interventionerne

Hjernetræning



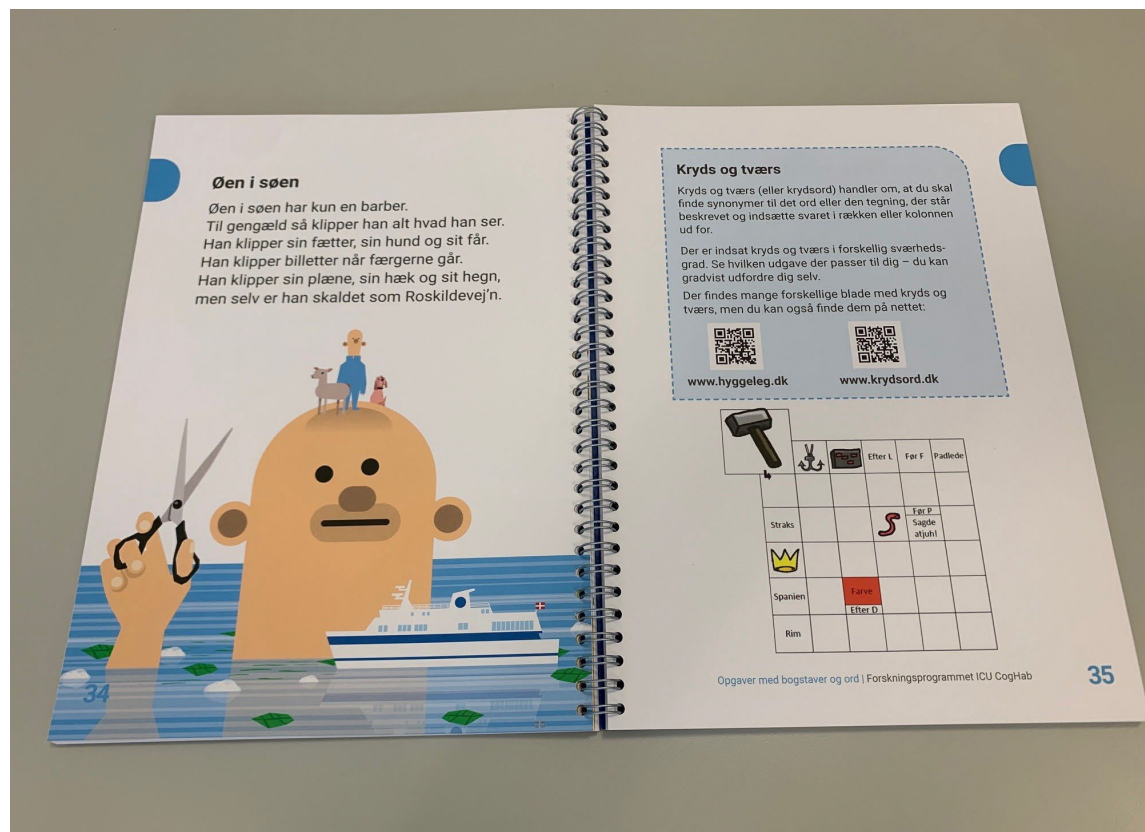
Mindfulness





Interventionerne

Hjerne træning

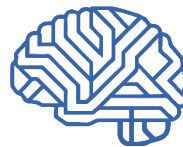




Interventionerne

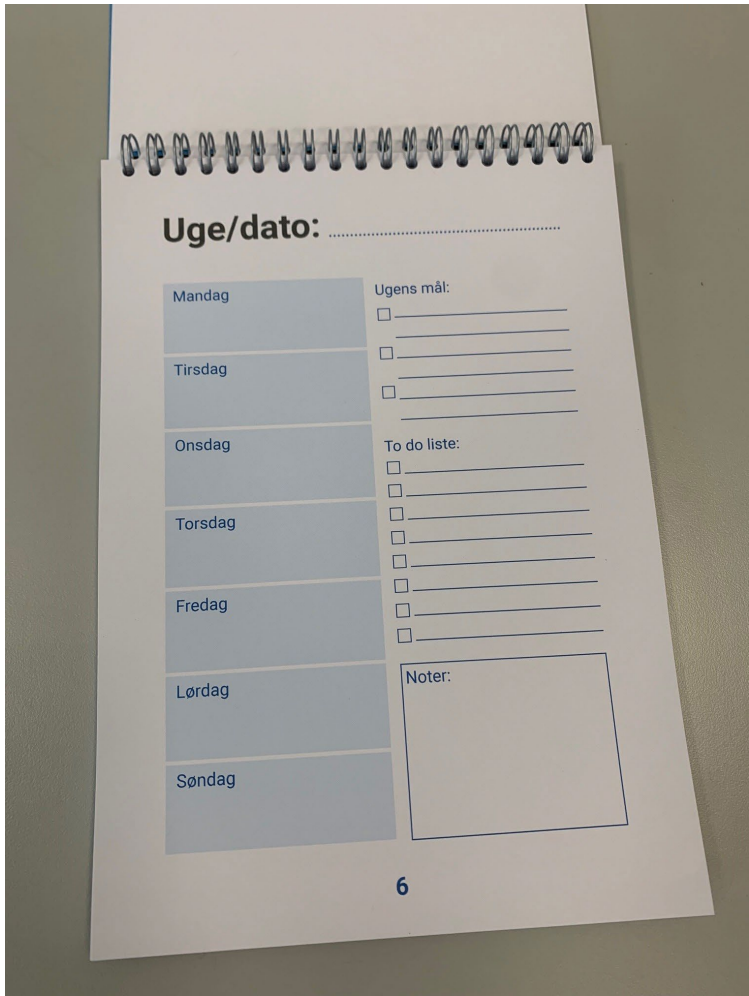
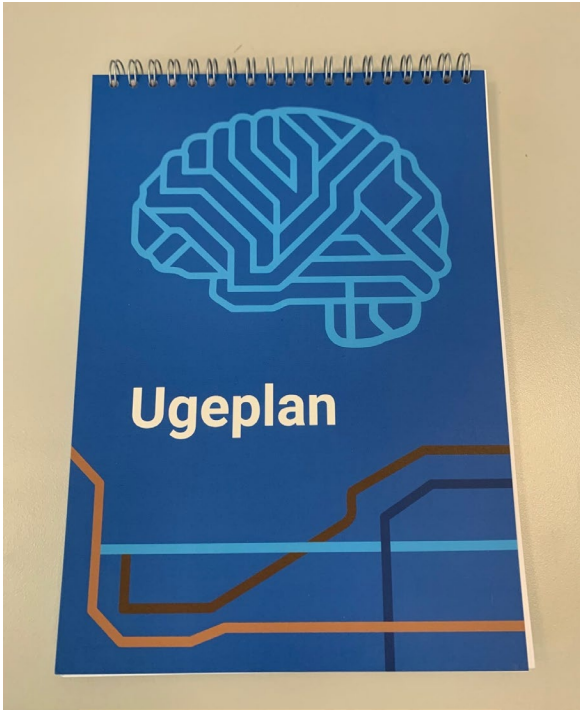
Hjernetræning

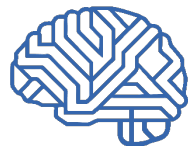




Interventionerne

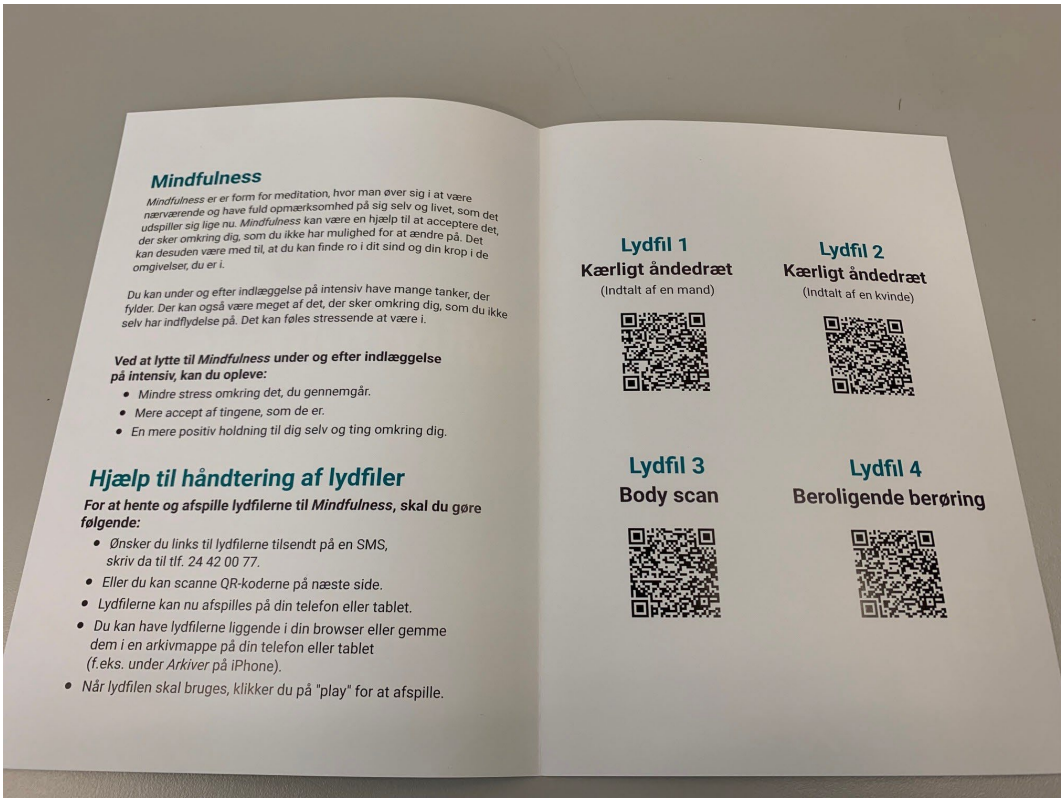
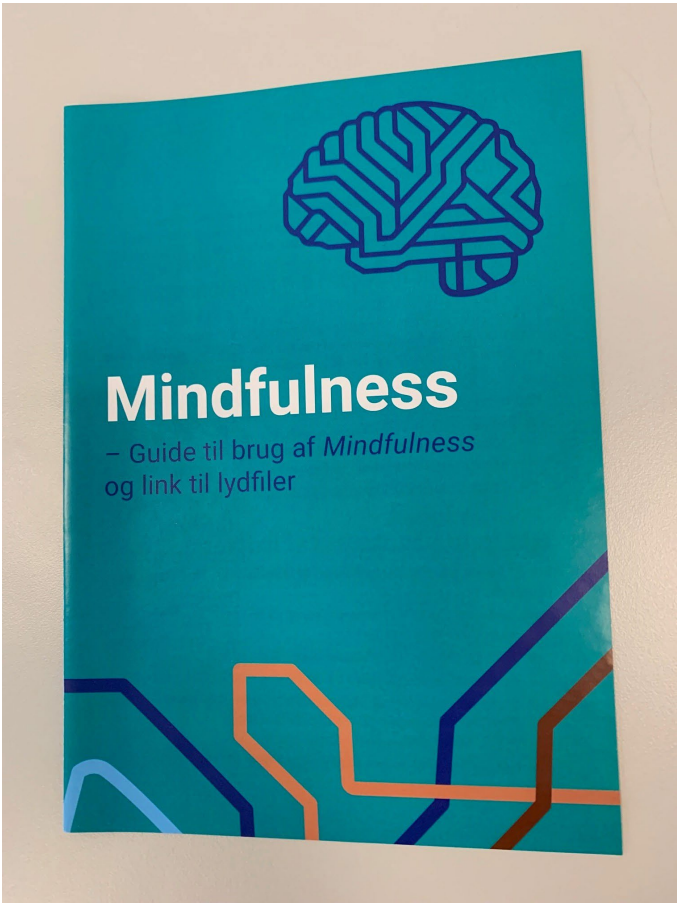
Hjerne træning





Interventionerne

Mindfulness





Interventionerne

Mindfulness





Interventionerne

Hjerne træning

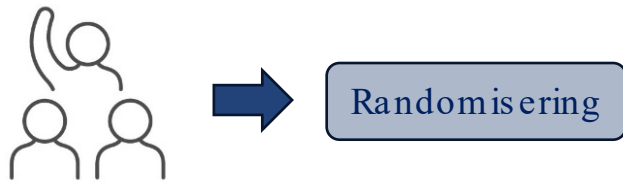
Mindfulness





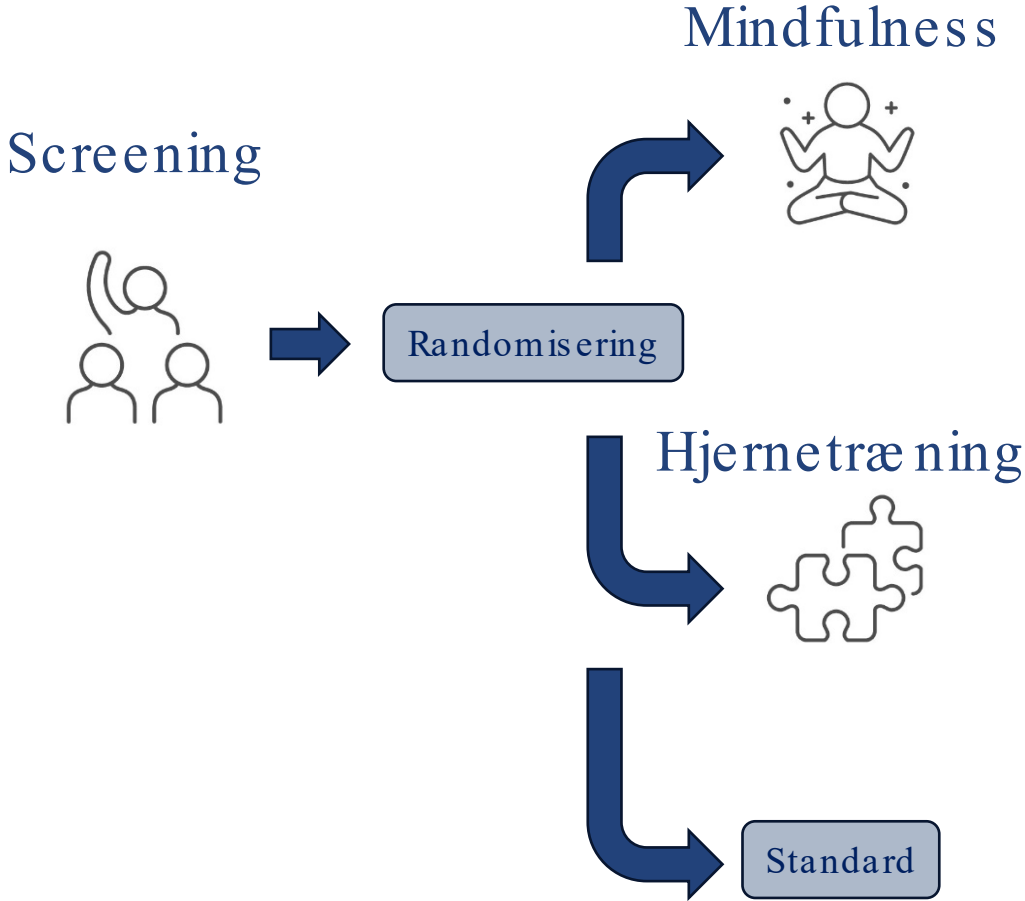
Randomiseret feasibility studie

Screening



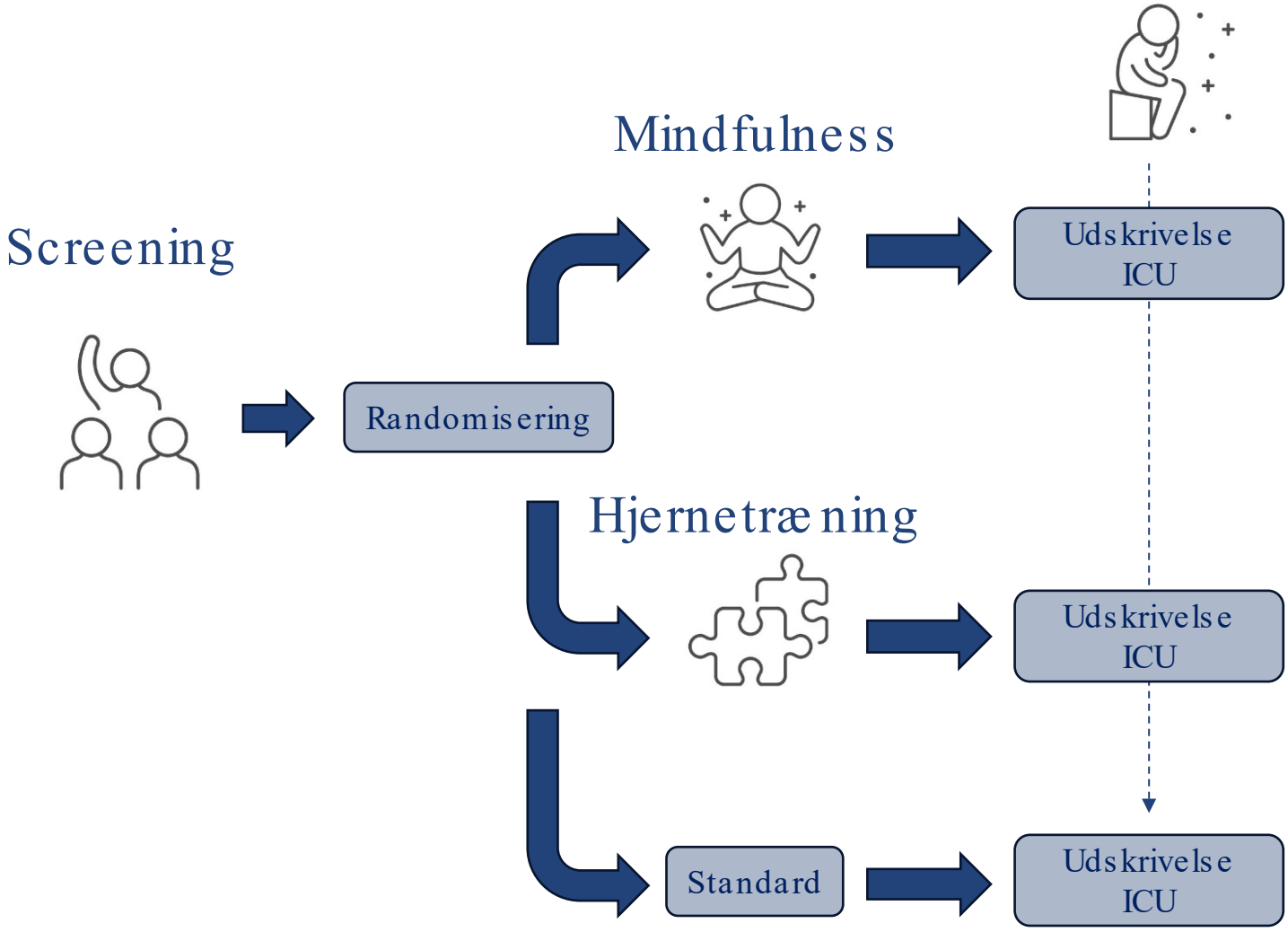


Randomiseret feasibility studie

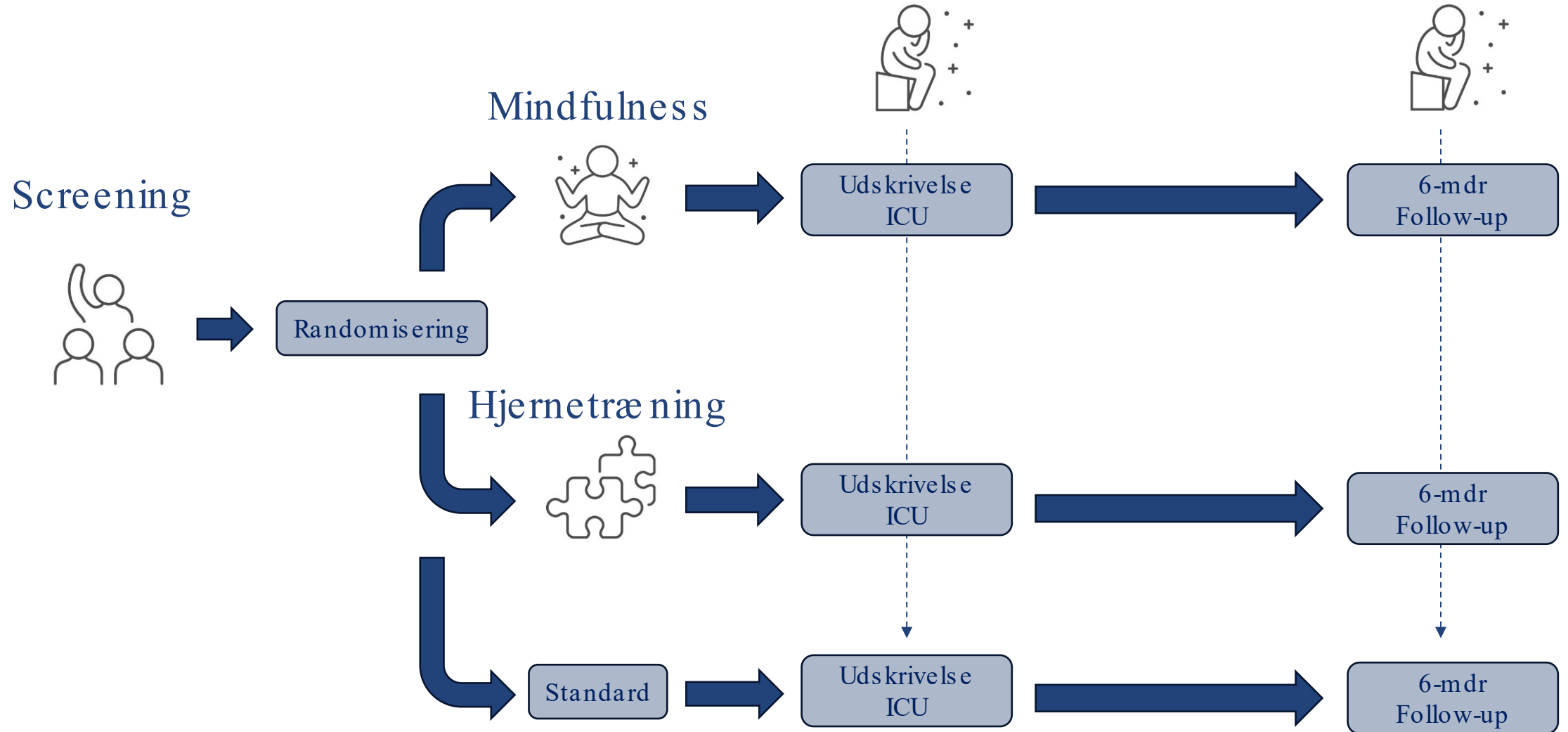




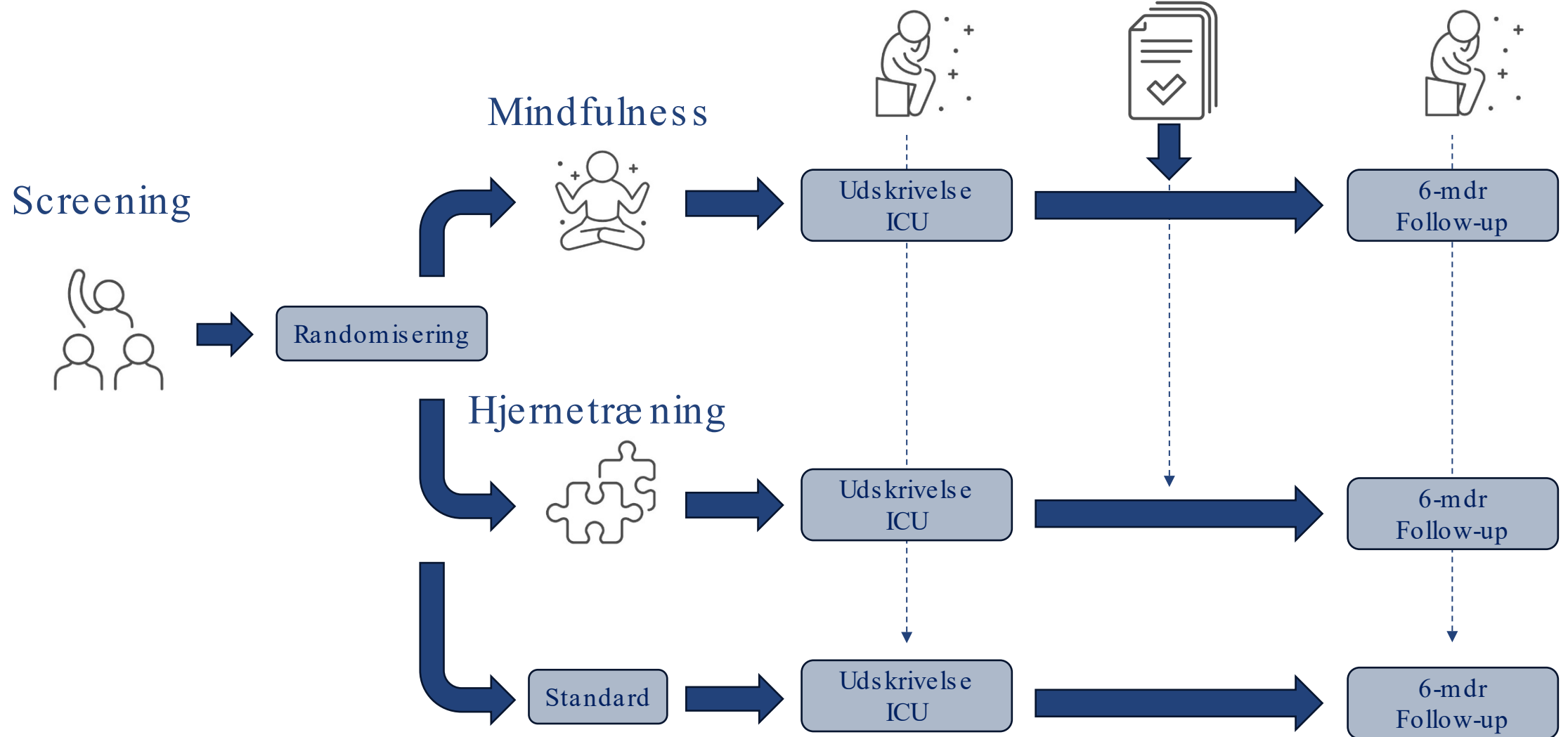
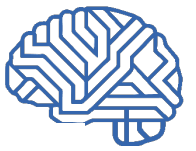
Randomiseret feasibility studie



Randomiseret feasibility studie

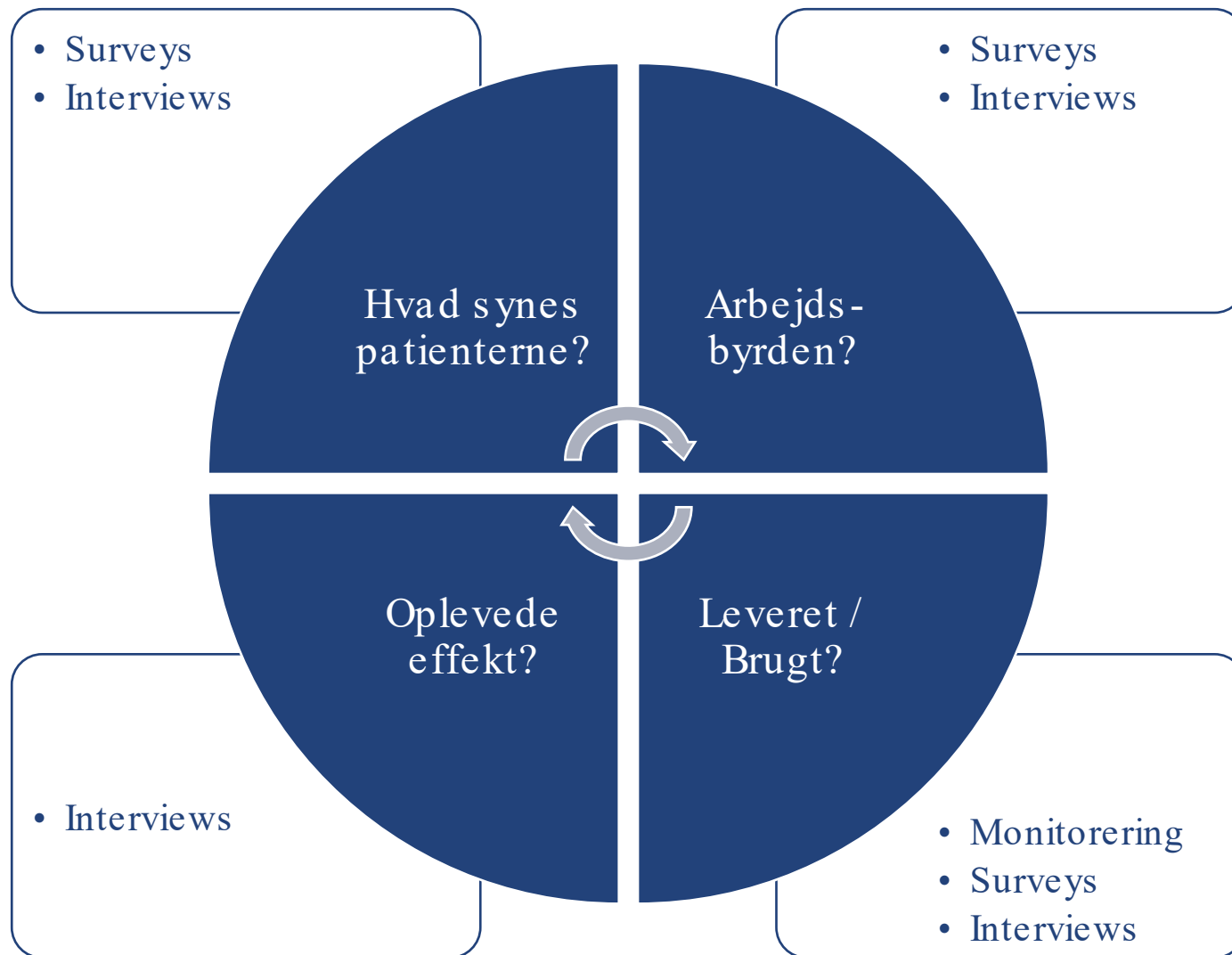


Randomiseret feasibility studie





Evalueringemetoder





Næste skridt



1. Tilpasse intervention (indhold, levering/brug, dosis, eller lignende)
2. Teste effekt / Implementere

Tusind tak



Kontakt:

Katrine Astrup Sørensen

katrs0@rm.dk

EKSTRA SLIDES....



Design and plan

- Randomized Clinical Feasibility Trial
- Inklusion fra: Juni 2024 - Juni 2025

